

**EQUIPMENT LIST**

- Apple
- Audioquest
- Autonomic Controls
- Avigilon
- Belden
- Channel Vision
- Cleerline
- Crestron
- ICE Cable
- Integra Home Theater
- Leviton
- Lutron
- Middle Atlantic
- Primex
- Samsung
- Shaw
- SnapAV
- Sonance
- Sony
- Strong
- Ubiquiti Networks
- Wattbox

**INDUSTRY PARTNERS**

- Adam Johnson
- Role: \_\_\_\_\_
- Andrew
- Role: \_\_\_\_\_
- Jarvis
- The
- Role: \_\_\_\_\_

**IMAGES**

1. Each lighting circuit in the home was tested for perfect ramping and anti-flicker.
2. CEDIA's judges were unanimous in their decision to give La Scala this trophy.
3. While the rest of the systems are outstanding, the lighting design in this home is truly breathtaking.

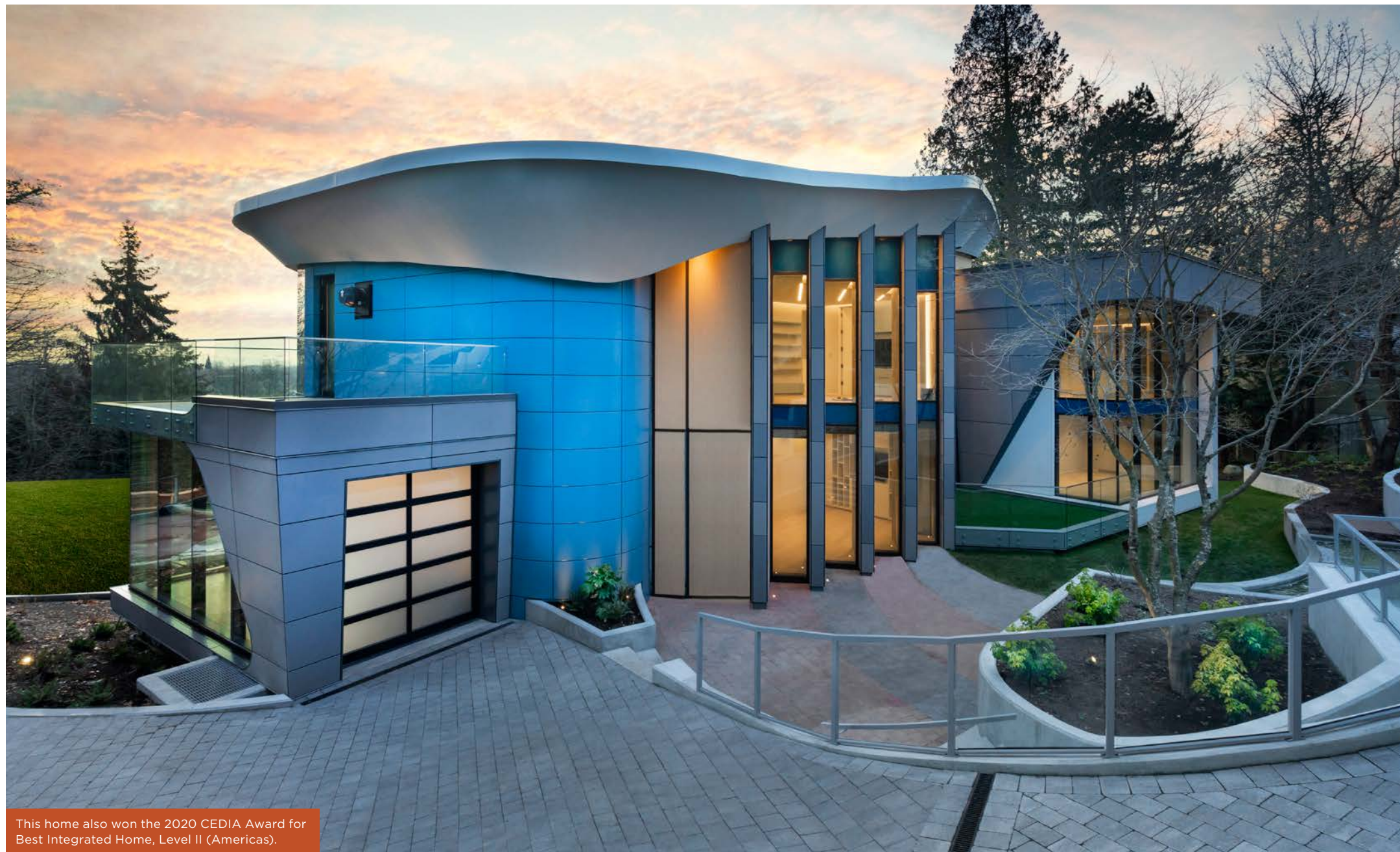


**LA SCALA**  
 1385 Boundary Road, Vancouver, BC V5K 4T9 Canada  
 604.606.1888 | [lascalaca.com](http://lascalaca.com) | CEDIA Member Since 1993

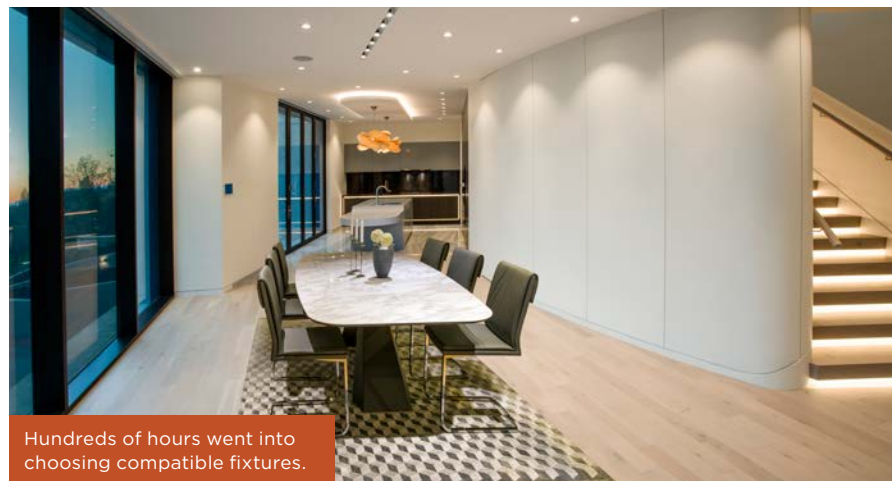
**CEDIA MEMBER**

CEDIA is the global trade organization for firms designing and installing custom residential technology, and is the leading authority on the connected home. The CEDIA Awards represent the pinnacle of excellence in the home technology industry.





This home also won the 2020 CEDIA Award for Best Integrated Home, Level II (Americas).



Hundreds of hours went into choosing compatible fixtures.

EACH LIGHTING CIRCUIT IN THE HOME WAS TESTED AGAIN AND AGAIN TO ENSURE PERFECT PERFORMANCE.



La Scala designed the shading for this home's 140 floor-to-ceiling windows as well.



WINNER

Best Lighting Americas

PROJECT

### The Starship

TECHNOLOGY INTEGRATOR

### La Scala

CEDIA's judges were unanimous in awarding this project the 2020 trophy for Best Lighting System.

La Scala had never been part of such a bespoke "total environment" creation. The LED lighting design for this project was on point. The futuristic lines and cove lighting add to the "starship" theme.

To create these effects properly, hundreds of hours went into fixture compatibility research. Each lighting circuit in the home was tested for perfect ramping and anti-flicker with various output modules. There's a trick in which one turns one's head and monitors potential LED flicker with the side edge of your field of view, your peripheral vision — the team did that. Everywhere. La Scala had to pretend they were the homeowner in various lifestyle and lighting conditions before they'd would give a room the passing mark. It's truly a one-of-a-kind lighting showcase.

Another feature worth a mention the work that went into shading here — after all, controlling ambient light is important, too. In tackling the 140 floor-to-ceiling windows, La Sacala was able to take advantage of long room lines and Crestron's angle coupler shading brackets to reduce this down to 50 motorized outputs. It was a tricky shading system to deploy and the team estimates they had spent double the time allocated making sure the mitres were perfect on all of the blind boxes. Angled windows — and especially angled couplers — have to be precise to maintain the proper look and function.

This home also picked up the 2020 CEDIA Award for Best Integrated Home, Level II (Americas).